



**Clayton High School
Community Forum**



Agenda

- Welcome & Introduction
- Future of Education
- Context
- Long Range Facility Master Plan Process
 - Assessments Process
 - District & Community Engagement Opportunities
 - Subcommittee Meetings Recap
 - Remaining Schedule
- Review Results:
 - Utilization
 - District Wide Common Themes
 - Hawkins Lilley School Appraisal Results
 - High Priorities
- Community Discussion & Feedback



Context

- Guiding Questions for Facility Goals
 - Does this facility elevate our learners or hold them back?
 - Do you want to grow this facility, or do you want something completely new?
 - What do we want this facility to be for the next 10 to 20 years?



Comparative Districts' Upgrades

Ladue School District

- Will have renovated all 4 elementary schools and 1 middle school by end of 2024.

Lindbergh School District

- Will have renovated/remodeled parts of all 6 elementary schools, both middle schools, 1 high school, and 1 early childhood center by beginning of 2027.
- Will have built new gyms/storm shelters at 3 of their elementary schools, a PK-12 agricultural STEM learning center, and a district wide Support Services Center by beginning of 2027.

Parkway School District

- Will have renovated parts of all 19 elementary schools, all 5 middle schools, all 5 high schools, and 1 early childhood center by end of 2028.

Pattonville School District

- Will have renovated/remodeled parts of all 5 elementary schools, 2 middle schools, 1 high school, 1 early childhood center, and their Academy of Innovation by middle of 2028.
- Will have built new gyms/storm shelters at 3 elementary schools and 1 of their middle schools by middle of 2025.



Clayton Strategic Goals

A place for everyone...

GOAL #1

We will ensure all learners, regardless of their identity, feel safe and valued.

Meeting these objectives will ensure Clayton graduates are:



Culturally Conscious



Empathetic



Self-Actualized



Collaborative

...to grow as learners...

GOAL #2

We will commit to the educational growth of our learners through an equitable, personalized and individualized learning experience.

Meeting these objectives will ensure Clayton graduates are:



Culturally Conscious



Intellectually Curious



Creative Thinker

...in head and heart.

GOAL #3

We will be dedicated to the personal growth of our learners in their social, emotional and physical well-being.

Meeting these objectives will ensure Clayton graduates are:



Empathetic



Self-Actualized



Collaborative



Long Range Facility Master Plan: Assessment Process

Site Assessments

- Assessed district's playgrounds, playfields, tracks, courts, parking lots, drives, exterior lighting, etc.

Facility Assessments

- Assessed each facility's floors, walls, and ceilings.
- Analyzed each facility's current and projected demographics to determine spatial utilizations and functional capacity.
- Documented district's long-term HVAC replacement plan.
- Assessed each facility's exterior building envelope, such as roofing, brick/masonry, & windows.
- Analyzed the district-wide building material standards.
- Utilized the Hawkins Lilley Guide for School Appraisal to measure the older buildings against 21st century educational requirements.

Safety Assessments

- District completed the Tier One Safety & Security Audit.

Demographic Assessments

- Analyzed the utilization through a district-wide demographic study.



Subcommittee Meetings Recap

Recap of Meeting #1

- Met with representatives from each building including Principals, Teachers, Staff, Students, & Parents
- Reviewed scope of work and deliverables
- Reviewed initial list of improvements identified from our walkthroughs with principals and admin and our own assessments

Recap of Meeting #2

- Reviewed the Overarching Priorities list at each school and asked them to prioritize them to use as the basis for our work moving forward
- Each sub-committee group voted, then followed up with a round table discussion of why each person chose one of their priorities
- Ensured consensus that we collectively identified the high priorities for each school



District & Community Engagement Opportunities

District Steering Committee

- 5 meetings plus joint meeting with Sub Committees at conclusion

Building Level Sub Committee (2 Meetings with Each Below)

- Captain ES
- Glenridge ES
- Meramec ES
- Wydown MS
- Clayton HS
- Family Center
- Athletics & Activities
- Coordinators of Curriculum
- Safety & Security

Community Forums (8 Small Group Community Forums)

- Captain ES
- Glenridge ES
- Meramec ES
- Wydown MS
- Clayton HS
- Family Center
- 2 District Wide

Board of Education

- 3 Meetings

Community Survey





LRFMP

SEPTEMBER	OCTOBER	NOVEMBER	DECEMBER	JANUARY
9/4 Sub Committees (Meramec, Captain, CHS)	10/1 Sub Committees (Family Center, Meramec, CHS)	11/6 Building Level Community Forum (Captain, CHS)	12/4 District Community Forum (CHS-Commons)	1/8 Joint Steering & Sub Committee (CHS-Commons)
9/4 BOE Meeting Update/Presentation	10/2 Sub Committees (Captain, Glenridge, Wydown)	11/7 Building Level Community Forum (Glenridge, Wydown)		1/22 Board of Education Meeting (Center of Clayton)
9/5 Sub Committee (Glenridge, Family Center, Wydown)	10/15 District Steering Committee	11/12 Building Level Community Forum (Family Center, Meramec)		
9/17 Special Meetings: Coordinators Council, Athletics and Activities and Safety and Security		11/12 District Community Forum (Wydown-Main Street)		
		11/20 District Steering Committee		
		11/20 BOE Meeting - Update/Presentation		

LRFMP: Utilization

2024-2025	2029-2030	2034-2035			2024-2025	2029-2030	2034-2035
Current Enrollment (#)	Projected Enrollment (#)	Projected Enrollment (#)	Teaching Stations; Specials (#)	Functional Capacity (#)	Current Utilization (%)	Projected Utilization (%)	Projected Utilization (%)
799	773	724	75; 51	TBD	TBD	TBD	TBD

Spatial Utilization

- Clayton's overall district enrollment is projected to remain relatively steady.
- Residential enrollment at Clayton High School is projected to decrease, which means the spatial utilization percentage will improve.
- Demonstrates that Clayton High School does not need general classrooms but has the opportunity to increase specialized learning.

Utilization (%)	Capacity
95%+	Over Functional Capacity
90-94%	Approaching Over Capacity
80-89%	At Functional Capacity
70-79%	Approaching Underutilization
0-69%	Underutilized



LRFMP: District Wide Common Themes



Safety & Security

- Continue improvements from the Tier One Safety and Security Audit.
- Redesign existing site circulation and add parking where needed.
- Improve WiFi and cellular service.



Maintenance & HVAC

- Improve air quality and controls of HVAC units and systems.
- Replace aging infrastructure.
- Address acoustic performance.



Accessibility & Inclusiveness

- Increase quality of accessibility routes and features.



Curriculum & Programming

- Increase quantity of flexible spaces, large and small, for daily learner use.
- Design outdoor learning and nature spaces.

LRFMP: Clayton High School Assessment Results

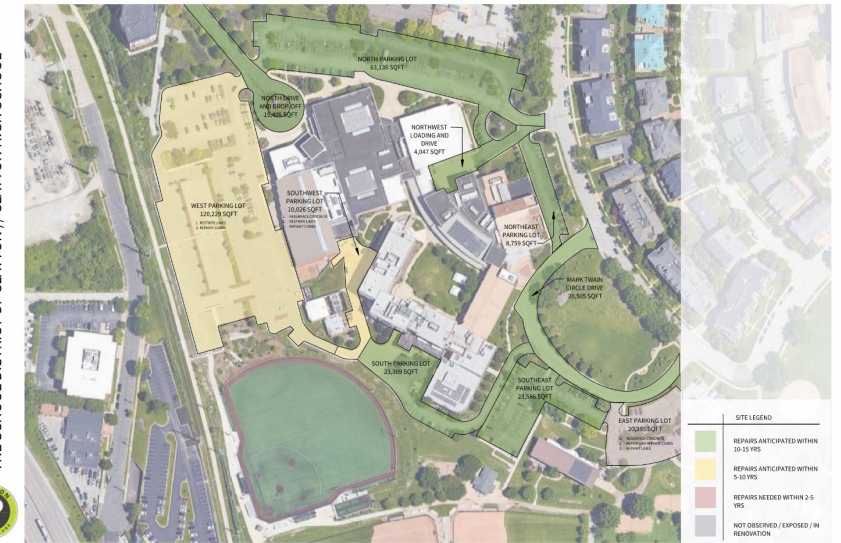
Site Assessments

- Lighting needs improvement site-wide, especially surrounding the building and in the parking lots.
- West and southwest parking lots need to be repaved.

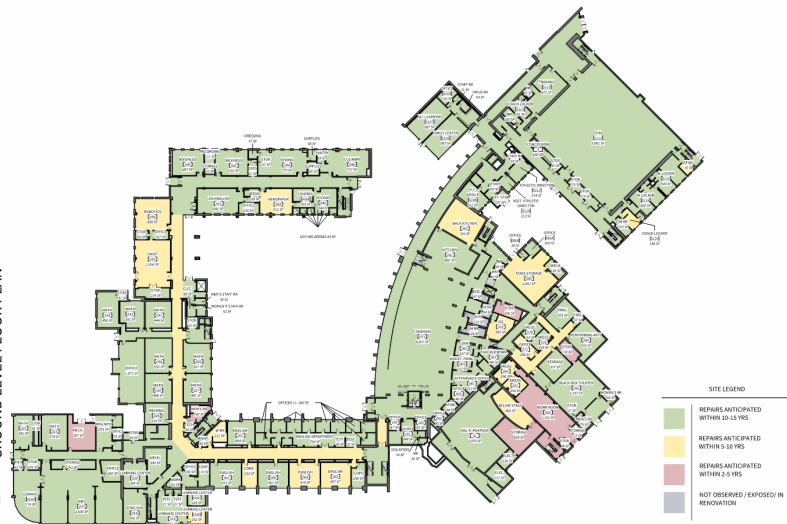
Facility Assessments

- Update wall, ceiling, and flooring finishes in various areas of the high school.

PARKING LOTS AND DRIVES ASSESSMENT
THE SCHOOL DISTRICT OF CLAYTON / CLAYTON HIGH SCHOOL



EXISTING WALL ASSESSMENTS
THE SCHOOL DISTRICT OF CLAYTON / CLAYTON HIGH SCHOOL
GROUND LEVEL FLOOR PLAN



LRFMP: Gay Field Assessment Results

Site Assessments

- Lighting surrounding concessions, the fields, and the parking lots needs improvement.
- The soccer fields and track practice fields need to be improved or relocated.
- The parking lot needs to be repaved, and additional parking needs to be provided.

Facility Assessments

- The field house, concessions, and press box need to be completely renovated or redesigned.



LRFMP: Clayton High School High Priorities



Student Services Suite

- Includes centralizing all student services on the main level, including the nurse, administration, PT, OT, etc.



SSD Resource Suite

- Includes learning spaces, cooldown spaces, restrooms, etc.



AMPED, Geometry in Construction, Robotics, and Catalyst Addition

- Includes labs and workspace for the above programs.



Performing Arts Addition / Renovations

- Includes renovating the auditorium, addressing the issues of levels across performing arts, renovating the black box, renovating the scene shop, renovating the theater lobby, increasing storage, increasing proximity to classrooms, etc.
- Providing a lecture hall space for multiple classes to gather and increasing the opportunities for guest lecturers, flexible collaboration space, etc.



Classroom Renovations

- Includes improving the quality of all the classrooms and learner spaces in the lower level.



Improve Accessibility Facility-Wide

- Increase quantity and quality of accessible routes and features both interior and exterior.



District Wide Common Themes

- Safety & Security
- Maintenance & HVAC
- Accessibility & Inclusiveness
- Curriculum & Programming





LRFMP: Clayton Activities & Athletics High Priorities



Adzick Field & Athletics at Clayton High School Improvements

-   Includes adding a softball field and completing the press box and dugout project.

Gay Field Renovations / Relocation

-   Includes renovating the press box, adding perimeter security, renovating the field house, renovating concessions, renovating facilities for track and field, adding more parking, renovating the existing drives, redesigning access to all Gay Field's facilities, etc.

High School Interior Activities & Athletics Improvements

-   Includes renovating the wrestling space, designing a space for cheerleading practice, adding storage, additional basketball courts (including seating and flooring), additional volleyball courts, additional access to the tennis courts, and additional access to the pool, etc.

District Wide Common Themes

- Safety & Security
- Maintenance & HVAC
- Accessibility & Inclusiveness
- Curriculum & Programming



Instructions

- **Sign-in Sheets**
 - Please complete the forms at your tables.
- **General Questions**
 - Paragon and School District of Clayton staff will be at each station and floating around.
- **Glow & Grow**
 - With your small group, “Glow” and ask yourself the following questions:
 - “What are you proud of in Clayton High School?”
 - “What parts of Clayton High School are elevating our Learners?”
 - With your small group, “Grow” and ask yourself the following questions:
 - “What would you like to improve for Clayton High School’s Learners?”
 - “What parts of Clayton High School are hindering our Learners?”
- **Roundtable**
 - Nominate a speaker from your small group. Each speaker will report out **ONE** of their top take-aways, repeating the process until all groups have said all take-aways.



LRFMP: Next Steps

NOVEMBER	DECEMBER	JANUARY
11/6 Building Level Community Forum (Captain, CHS)	12/4 District Community Forum (CHS-Commons)	1/8 Joint Steering & Sub Committee (CHS-Commons)
11/7 Building Level Community Forum (Glenridge, Wydown)		1/22 Board of Education Meeting (Center of Clayton)
11/12 Building Level Community Forum (Family Center, Meramec)		
11/12 District Community Forum (Wydown-Main Street)		
11/20 District Steering Committee		
11/20 BOE Meeting - Update/Presentation		

Community Input

- District Community Forums
- Survey



Thank You!

