

Identify two ways that surface area to volume ratio is increased for more efficient break-down during digestion. Be sure to include:

1. Location **MOUTH** **STOMACH**

2. Action that increases surface area:vol

3. The chemical digestion that occurs

AMYLASE

STARCH

CARB.

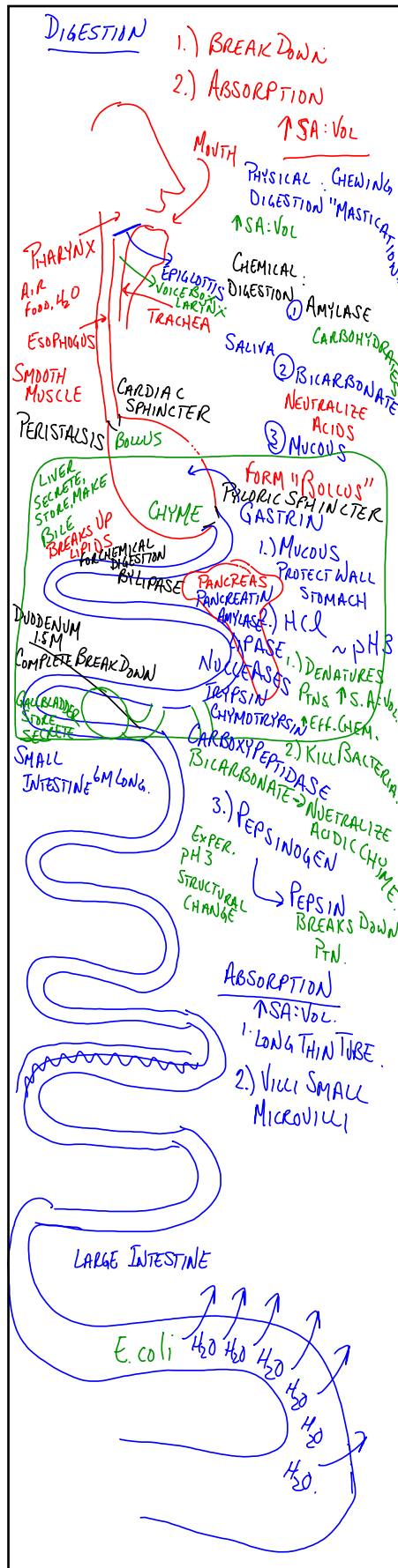
PEPSIN BREAKS

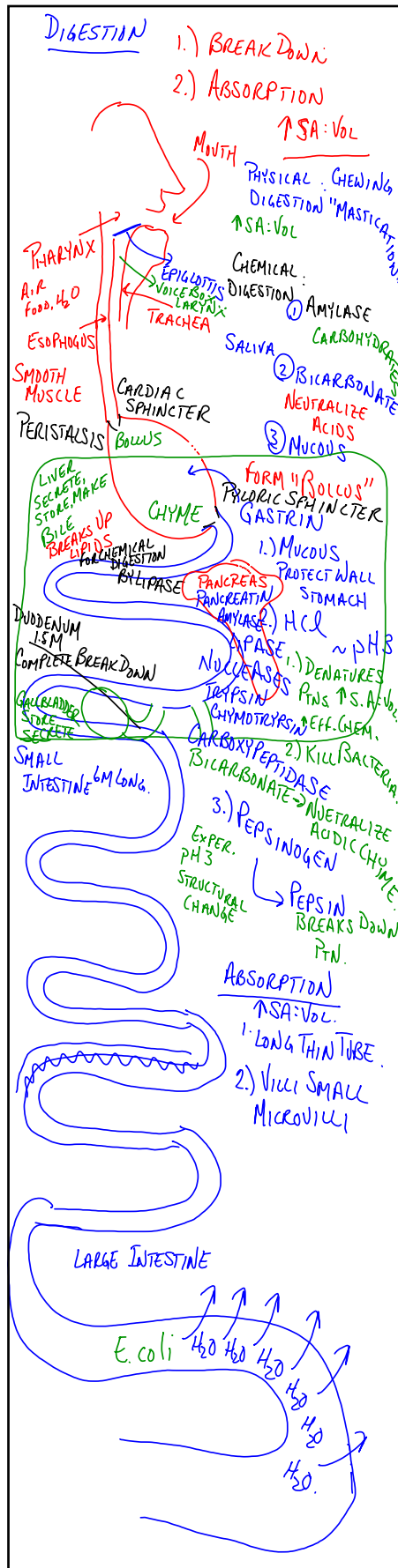
PEPTIDE BONDS

SMALL INTEST.

BILE BREAKS
UP LIPIDS

LIPOASE





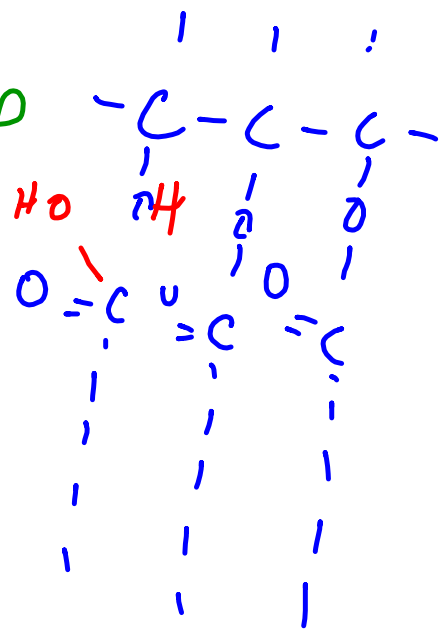
SIREC

p 71

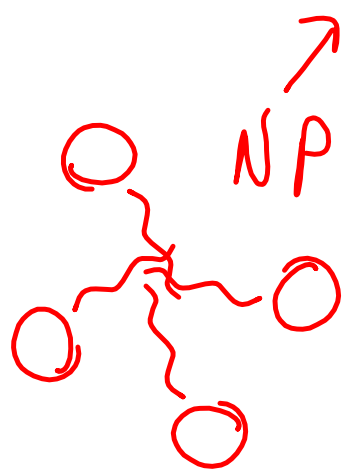
INTRACELLULAR

EXTRA "

DIGESTION NP



NP
NP
NP



POLAR

MICELLES