



School District of Clayton students in first through eighth grade participate in the NWEA™ Common Core MAP® (Measure of Academic Progress®) Assessment for mathematics two-to-three times each year. Kindergarten students take part in the assessment in the spring.

NWEA assessments are used to measure a student's progress or growth in school. Your student's results show how much his or her math skills have grown from one year to the next.

The results of the NWEA assessment provide teachers with reliable, instructionally-useful data that can help determine a student's relative strengths and weaknesses.

NWEA assessments allow educators to make informed decisions to promote your student's academic growth.

For additional information, please contact the math specialist at your child's school or visit the District's website at claytonschools.net/nwea.

Captain Elementary School

Tyler Harger
314-854-6144
tylerharger@claytonschools.net

Glenridge Elementary School

Gina McNamara
314-854-6286
ginamcnamara@claytonschools.net

Meramec Elementary School

Karen Finder
314-854-6328
karenfinder@claytonschools.net

Wydown Middle School

Dave Powers
314-854-6462
davepowers@claytonschools.net

Educate. Inspire. Empower.



A Parent's Guide to Understanding the NWEA™ Common Core MAP® Assessment



Northwest Evaluation Association

www.claytonschools.net/nwea

How is the NWEA different from a traditional assessment?

- **The test is computer adaptive:** questions are generated based on student responses, with varying levels of difficulty based on the student's previous correct or incorrect answers
- **There is no time limit:** students can take as much time as they need to complete the assessment.
- **Results are calculated quickly:** teachers can access a student's results within 24 hours.
- **Scores indicate growth from one year to the next:** scores indicate what a student has learned, is learning and needs to learn regardless of his or her age and grade level.

What skills are measured?

NWEA provides information about a student's growth and performance in four goal areas.

Goal Areas: Grades K-5

- Operations and Algebraic Thinking
- Number and Operations
- Measurement and Data
- Geometry

Goal Areas: Grades 6-8

- Operations and Algebraic Thinking
- Real and Complex Numbers Systems
- Statistics and Probability
- Geometry

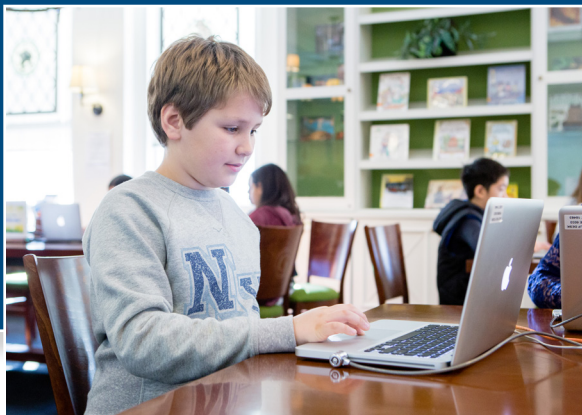
How is my student's performance measured?

The scale used by the NWEA assessment to measure your student's progress is called the RIT scale (Rasch uNIT). The RIT scale is used to chart your student's academic growth from year to year. Your student's RIT score

- is developed when he or she has answered 50 percent of the questions correctly and 50 percent incorrectly.
- identifies areas of relative strength or weakness.
- helps his or her teachers plan for differentiated instruction within curriculum units.

Visit claytonschools.net/nwea for more information on how to interpret your student's RIT score.

"The NWEA MAP has been an invaluable tool for making important decisions about teaching and learning math. With this data, we are empowered to make data-driven decisions specific to each student."



- Dr. Milena Garganigo,
Assistant Superintendent
of Teaching and Learning

How can I help my student with math?

Parental involvement at home is consistently associated with higher student achievement.

- Encourage a positive attitude towards math.
- Highlight real-world uses of math.
- Play games that use math.