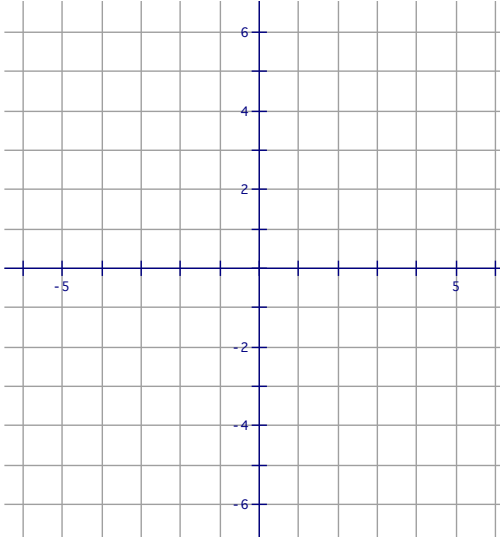


HAT 8/23/17
Transformations Homework

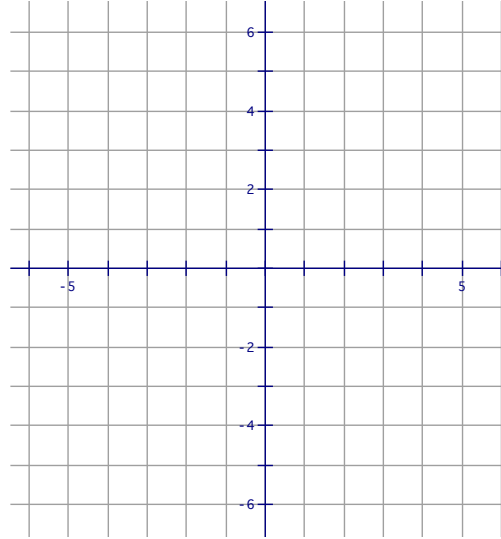
Name: _____

Graph.

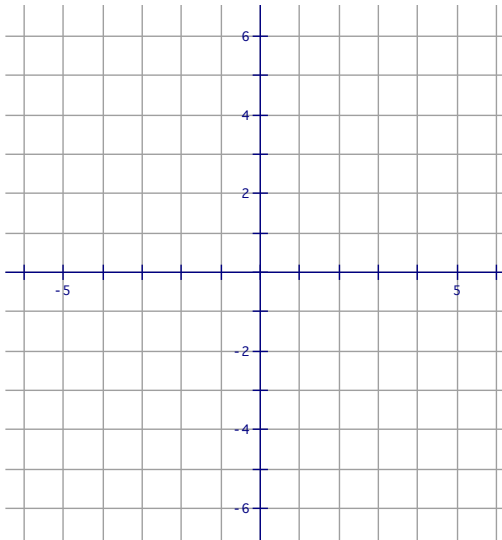
1. $f(x) = 3(x - 2)^2 - 6$



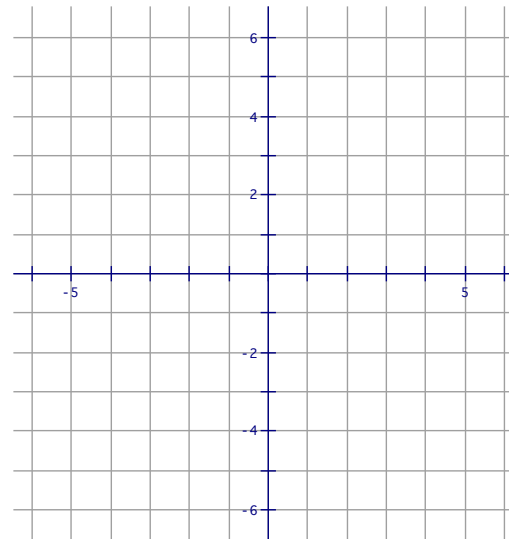
3. $f(x) = \frac{1}{3}|x| - 2$



2. $f(x) = \begin{cases} |x+2| & \text{for } x < 1 \\ -2\sqrt{x-1}+2 & \text{for } x \geq 1 \end{cases}$

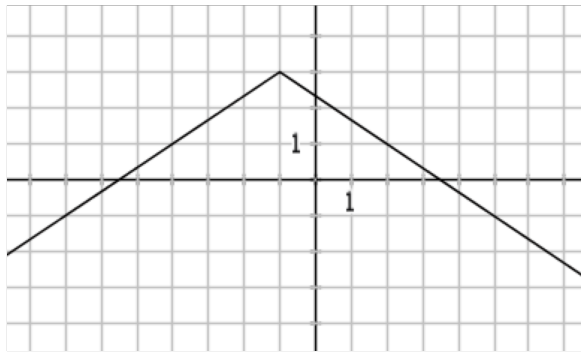


4. $f(x) = \begin{cases} (x-2)^2 - 3 & \text{for } x \leq 2 \\ x-5 & \text{for } x > 2 \end{cases}$

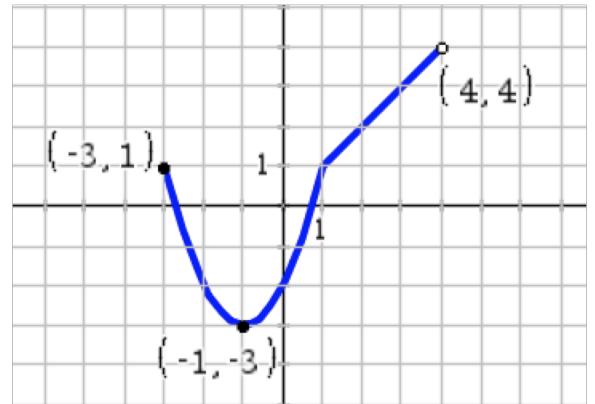


Write the equation of the function. State the domain and range.

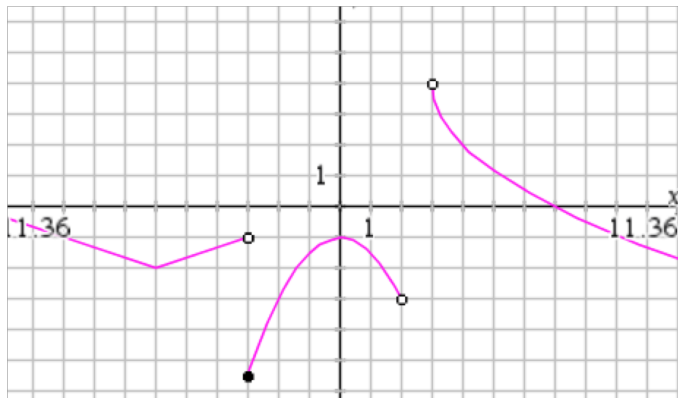
5.



6.



7.



8.

